

Name: _____ Date: _____
Northampton Community College
CISC 231 – Data Communications and LANs (CCNA 1)
STUDY GUIDE FOR CHAPTER 10

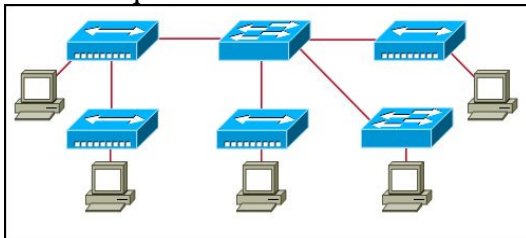
1. What type of cable is used to connect like devices (PC to PC)?
2. What type of cable is used to connect a PC to a hub or a switch?
3. What interface would you connect to for applying an initial configuration to a router? What type of cable is used?
4. Why is fiber preferable in inter-building connections?
5. Define attenuation as it relates to data communication?
6. What are the 10 tests performed when certifying cable?
7. How many useable host addresses are created when using the following masks:
 - a. 255.255.240.0?
 - b. 255.255.252.0?
 - c. 255.255.255.224?
8. What device is used to divide broadcast domains? What layer of the OSI model is this device at?

9. Describe a gateway address? Why is it important?

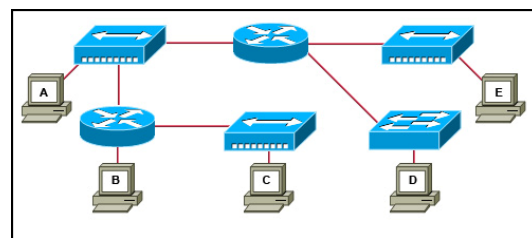
10. What are some of the common L2 Serial connection standards?

11. What is the difference between MDI and MDIX on a switch?

12. In the diagrams below, identify the number of broadcast domains and subnets required for each



Broadcast Domains ____ Subnets ____



Broadcast Domains ____ Subnets ____